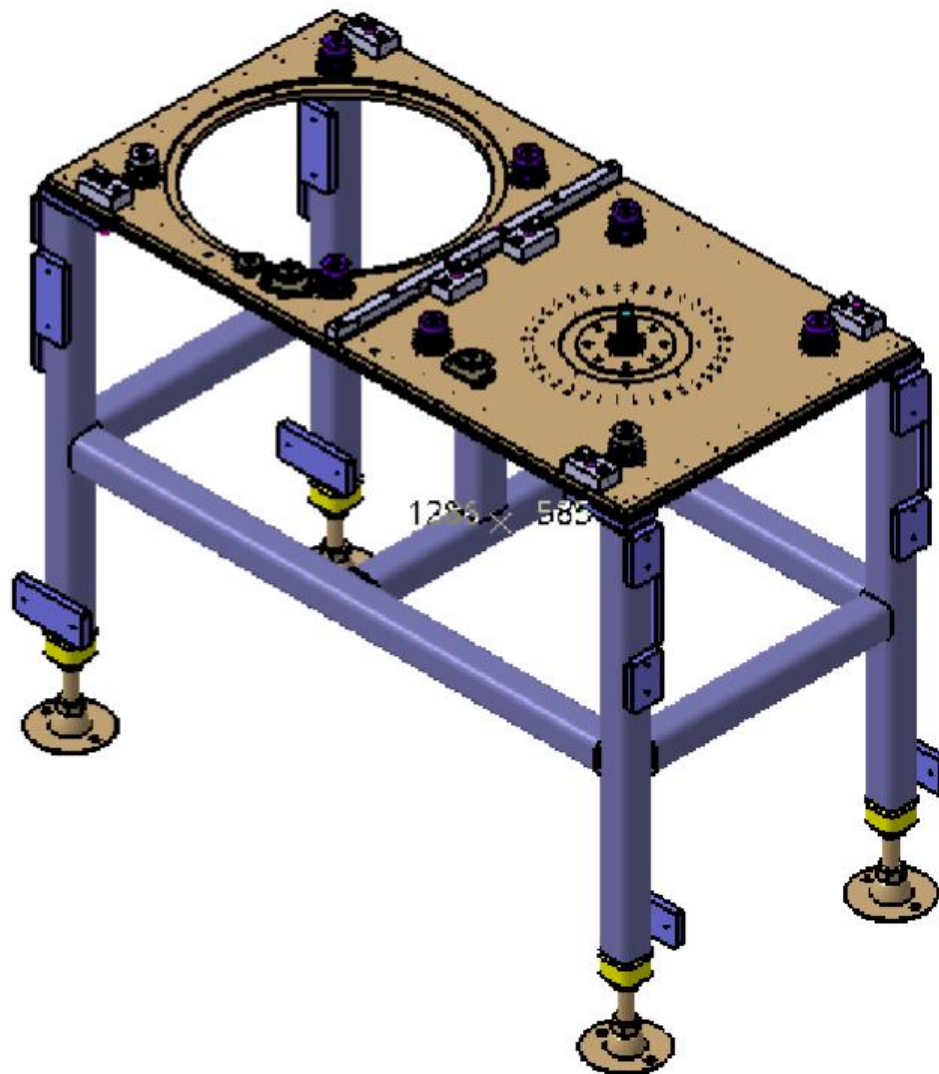


**Pre-Bid meeting on public tender notice no. I-ITN19005 for "Manufacturing, assembly and supply of mechanical subassemblies 1 to 17 Nos."**

**ITER INDIA**

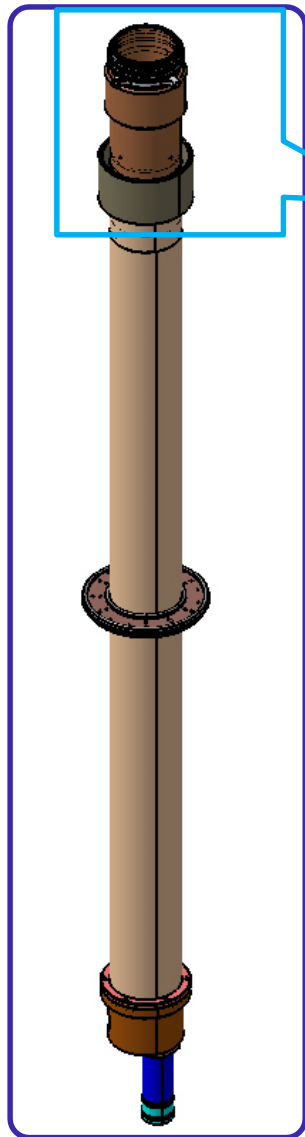
**Institute for Plasam Research, Bhat,  
Gandhinagar.**

# Mechanical Subassembly -1



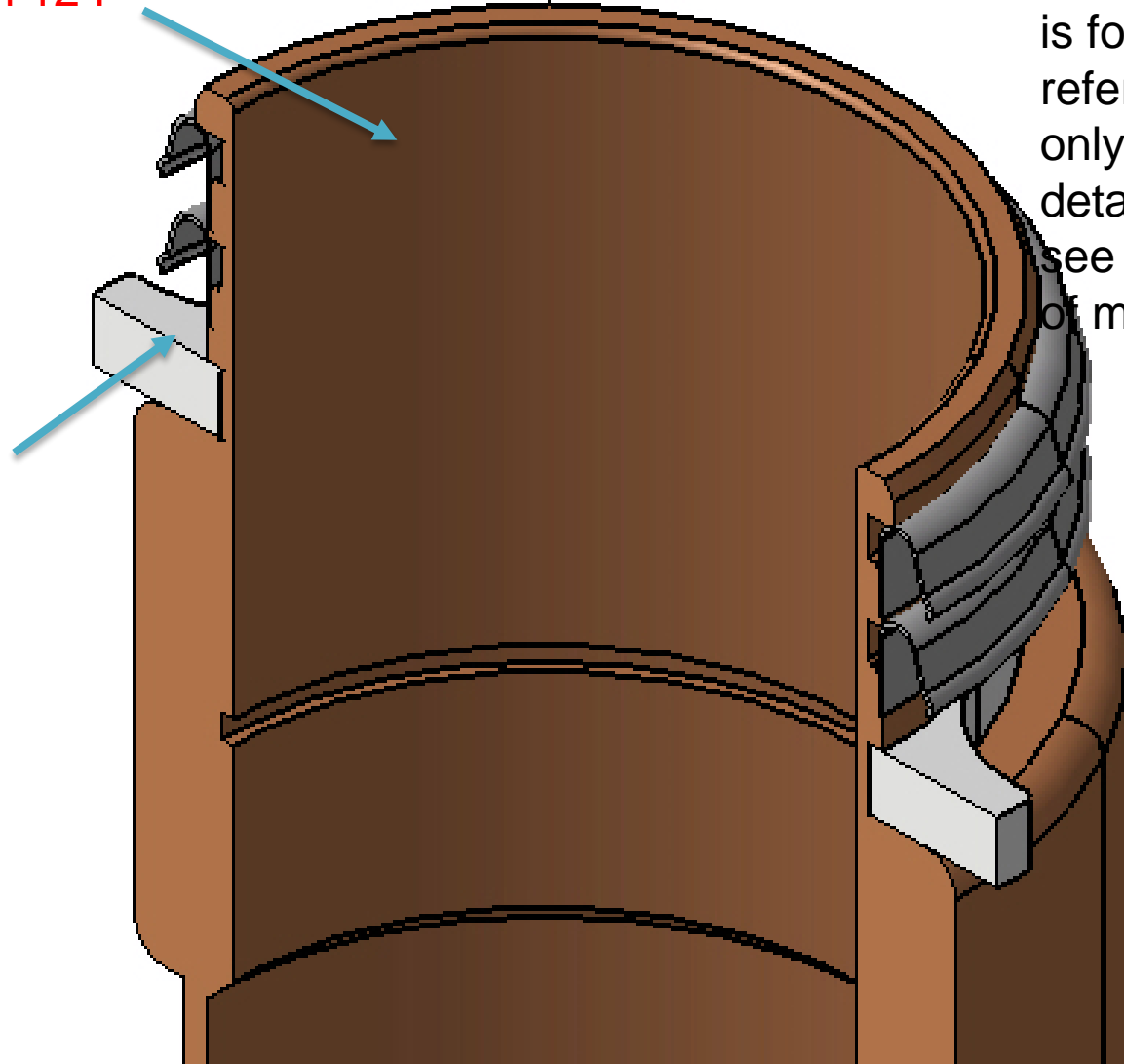
Note: This is for reference only, more detail pl see the Bill of material

# Mechanical Subassembly - 2



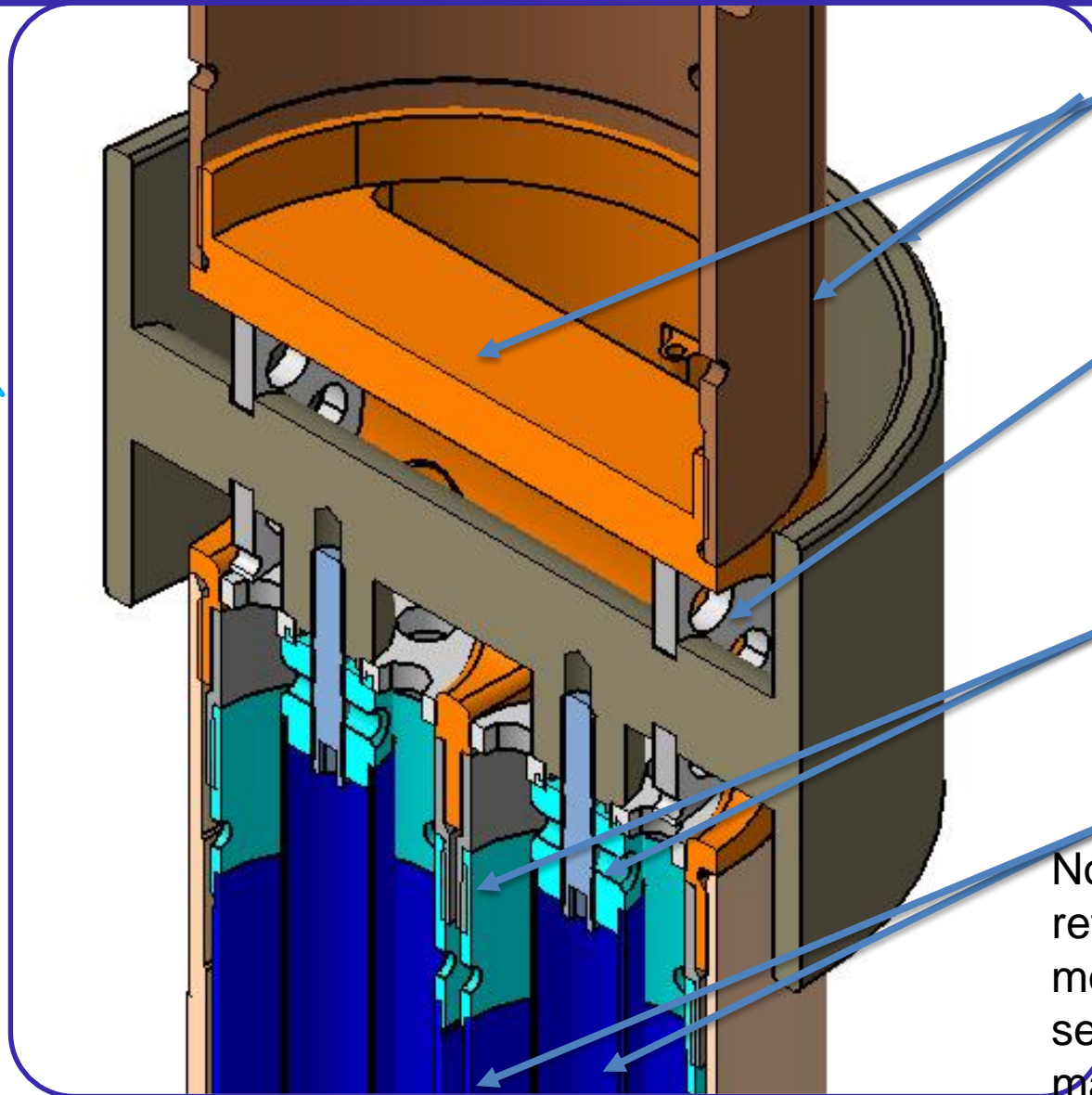
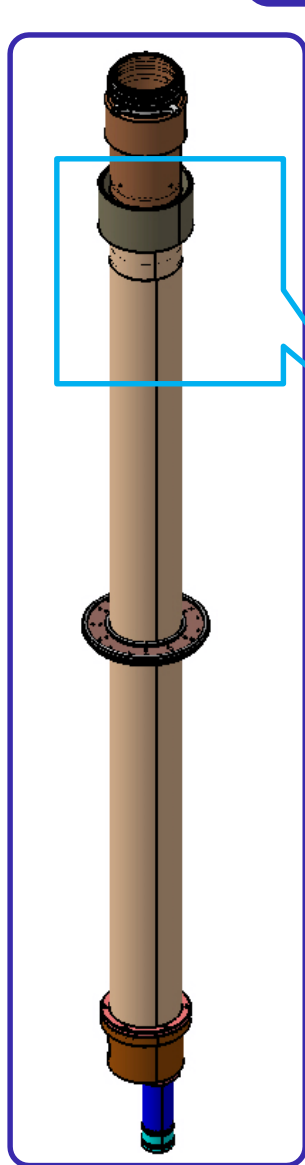
Cu Sn 12 P

PTFE  
Teflon



Note: This  
is for  
reference  
only, more  
detail pl  
see the Bill  
of material

# Mechanical Subassembly - 2



Cu Sn 12 P

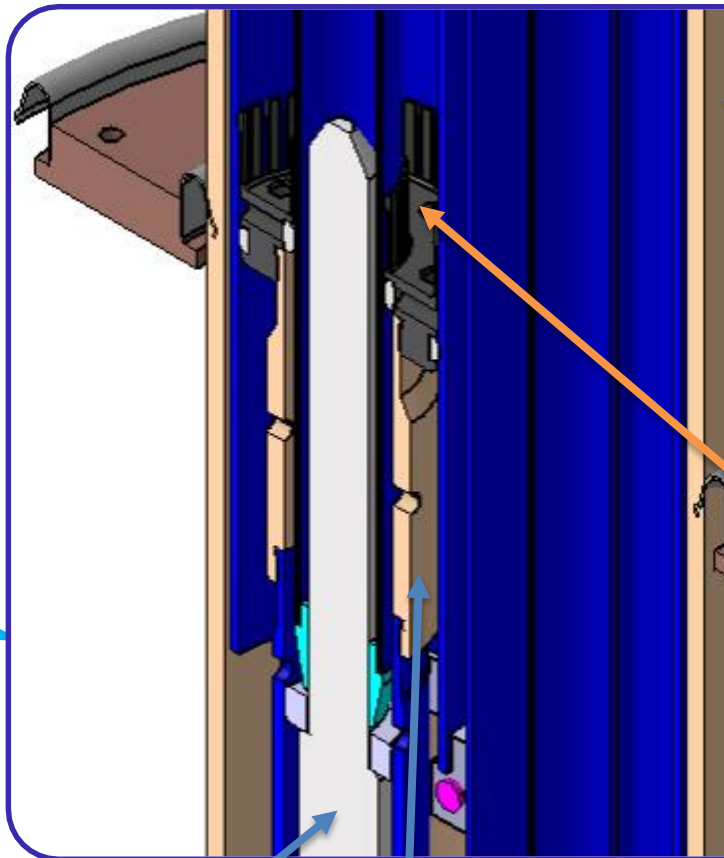
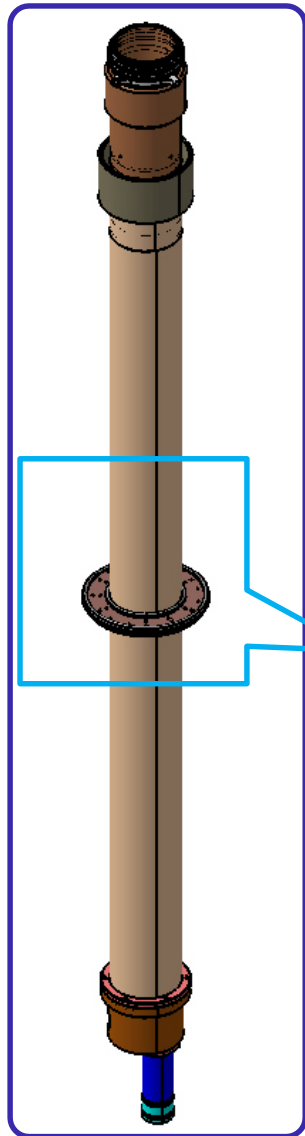
PTFE  
Teflon

CuZn39Pb2

Cu

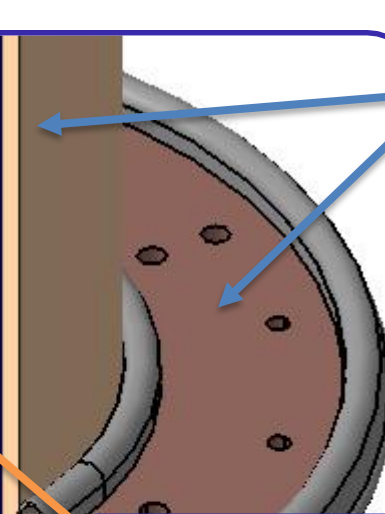
Note: This is for  
reference only,  
more detail pl  
see the Bill of  
material

# Mechanical Subassembly - 2



SS 304L

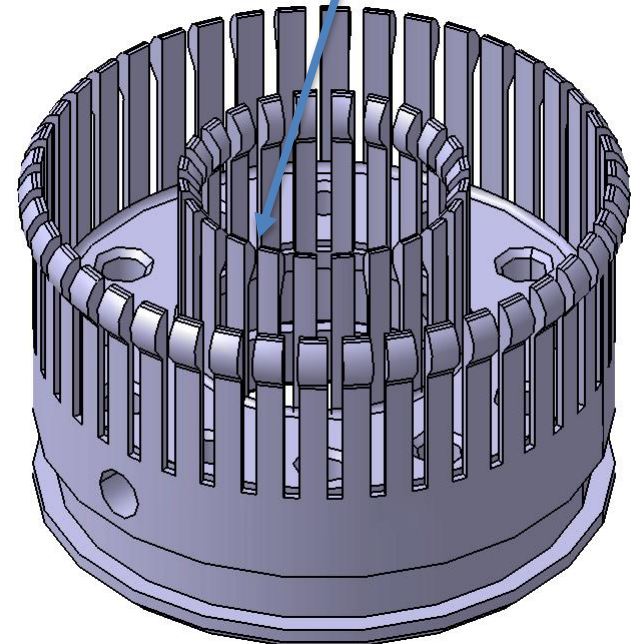
CuZn39Pb2



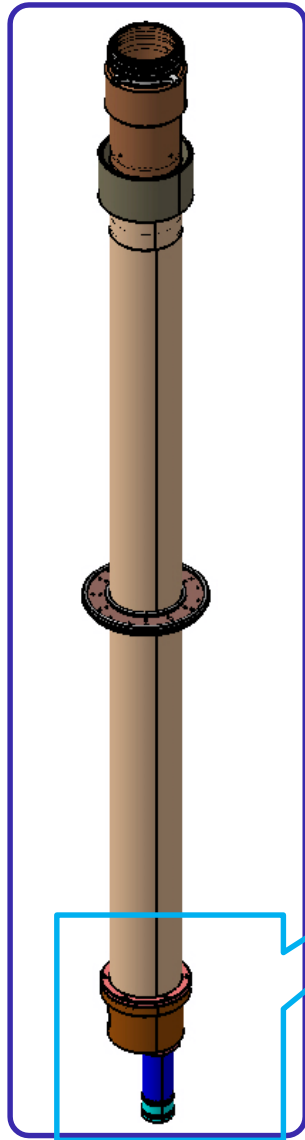
Cu Sn 12 P

Note: This is for reference only, more detail pl see the Bill of material

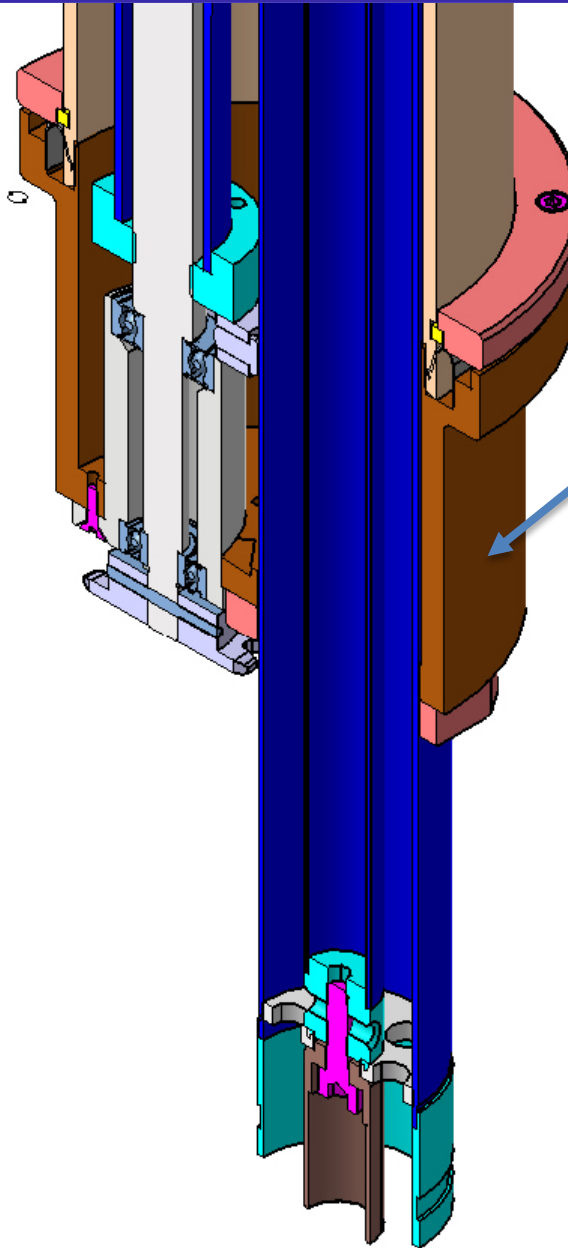
Be Cu 1.9



# Mechanical Subassembly - 2



ICH & CD



CuZn39Pb2  
Brass

Note: This is for  
reference only,  
more detail pl  
see the Bill of  
material



# Mechanical Subassembly -3

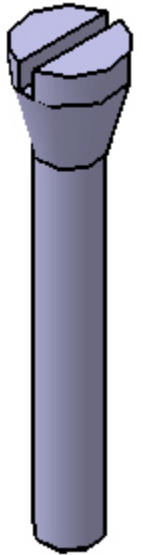
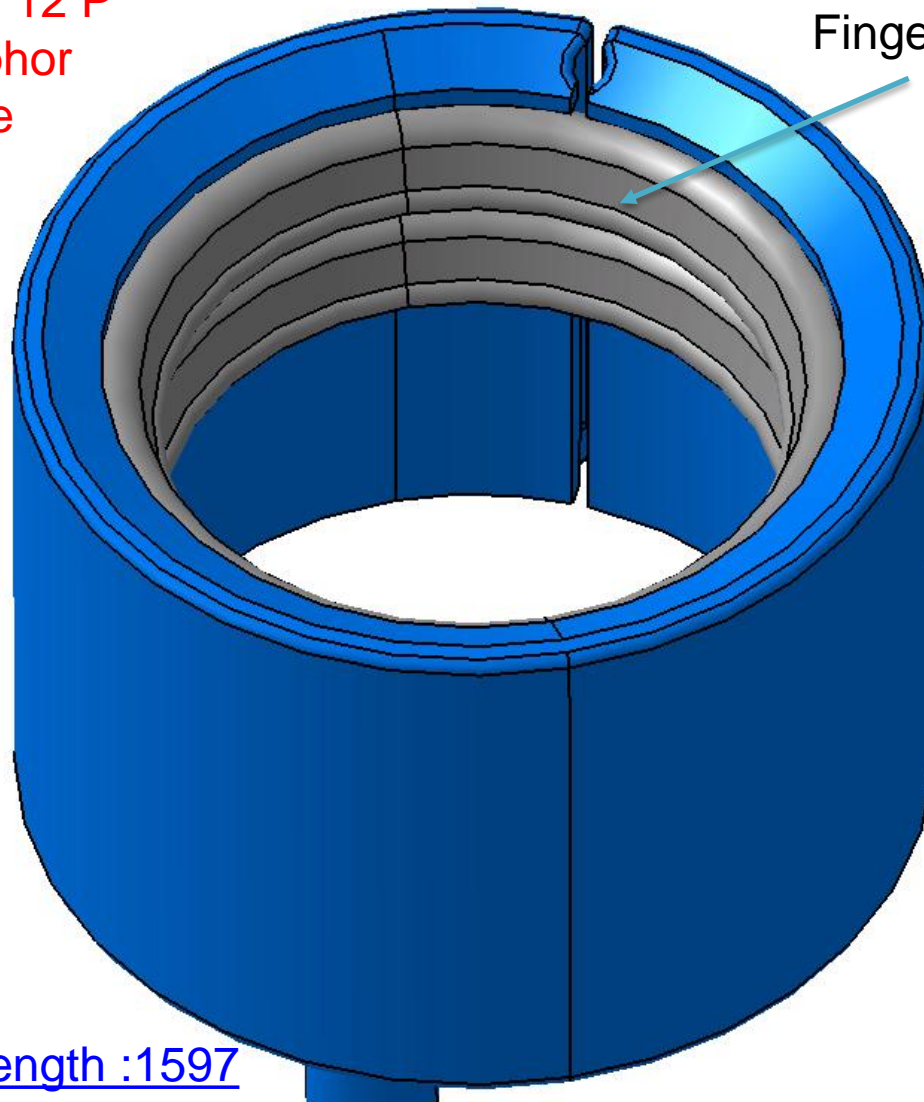


Note: This is for reference only, more detail pl see the Bill of material

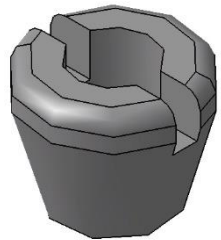
# Mechanical Subassembly -4

Cu Sn 12 P  
Phosphor  
bronze

Finger



SS 304L



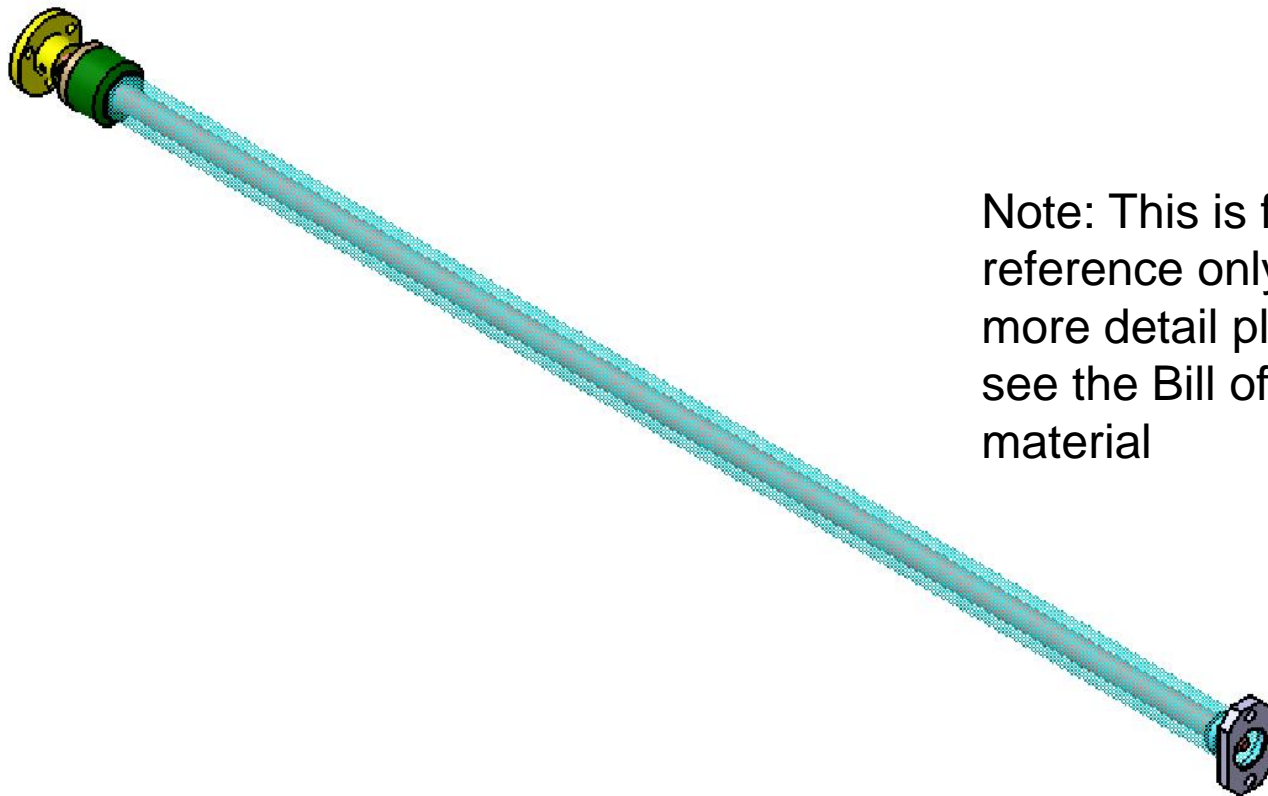
SS 304L

Note: This is for  
reference only, more  
detail pl see the Bill of  
material

Total length :1597

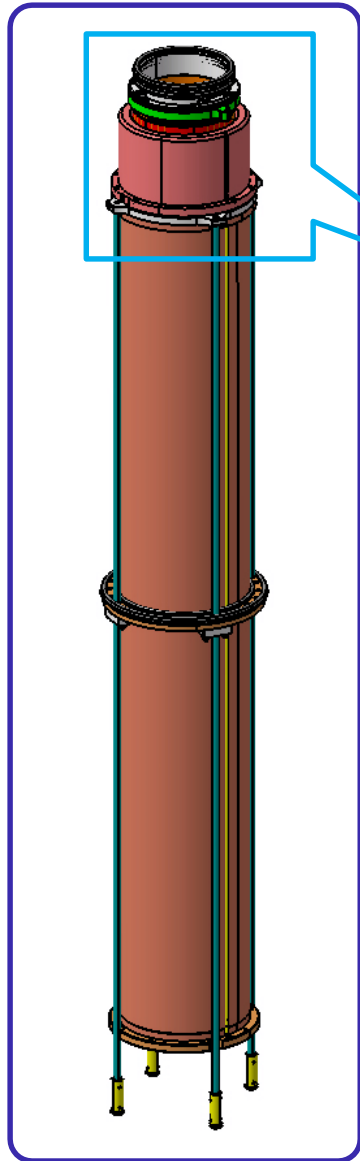


# Mechanical Subassembly -5



Note: This is for reference only, more detail pl see the Bill of material

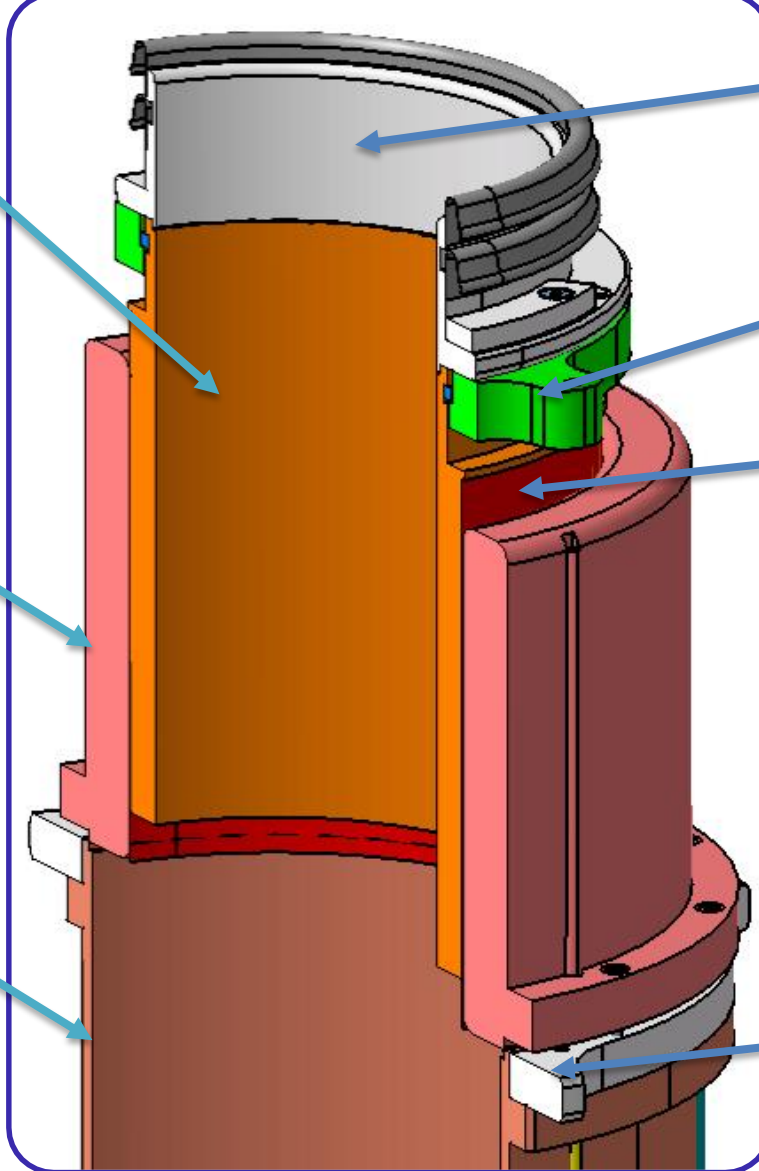
# Mechanical Subassembly -6



Cu Sn 12 P  
Phosphor  
bronze

Cu Sn 12 P  
Phosphor  
bronze

Cu Sn 12 P  
Phosphor  
bronze



CuZn39Pb2  
Brass

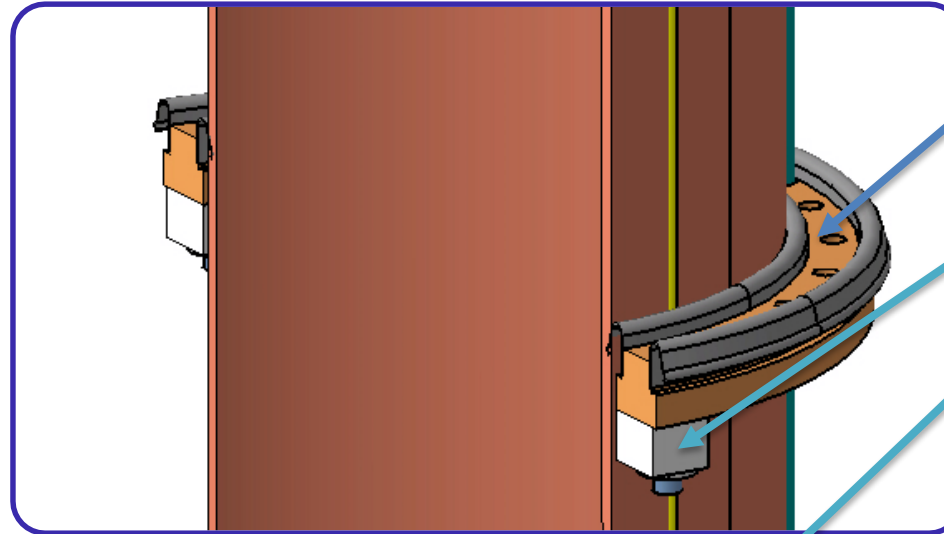
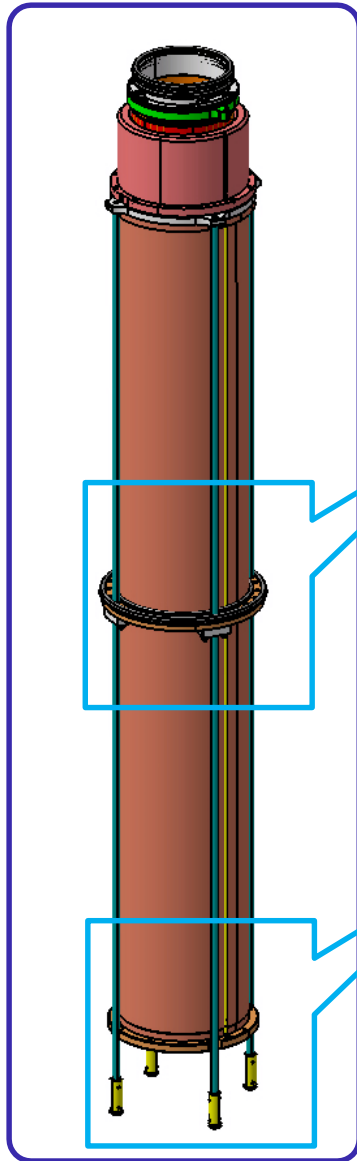
CuZn39Pb2  
Brass

Kapton

Note: This is for  
reference only,  
more detail pl  
see the Bill of  
material

PTFE

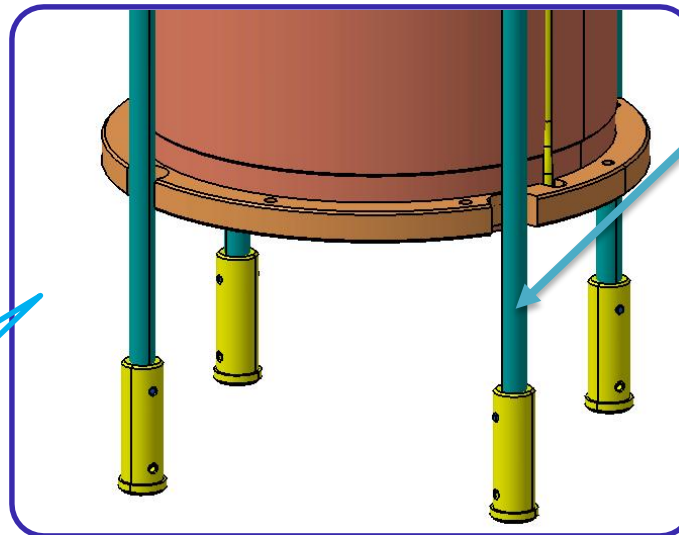
# Mechanical Subassembly -6



CuZn39Pb2  
Brass

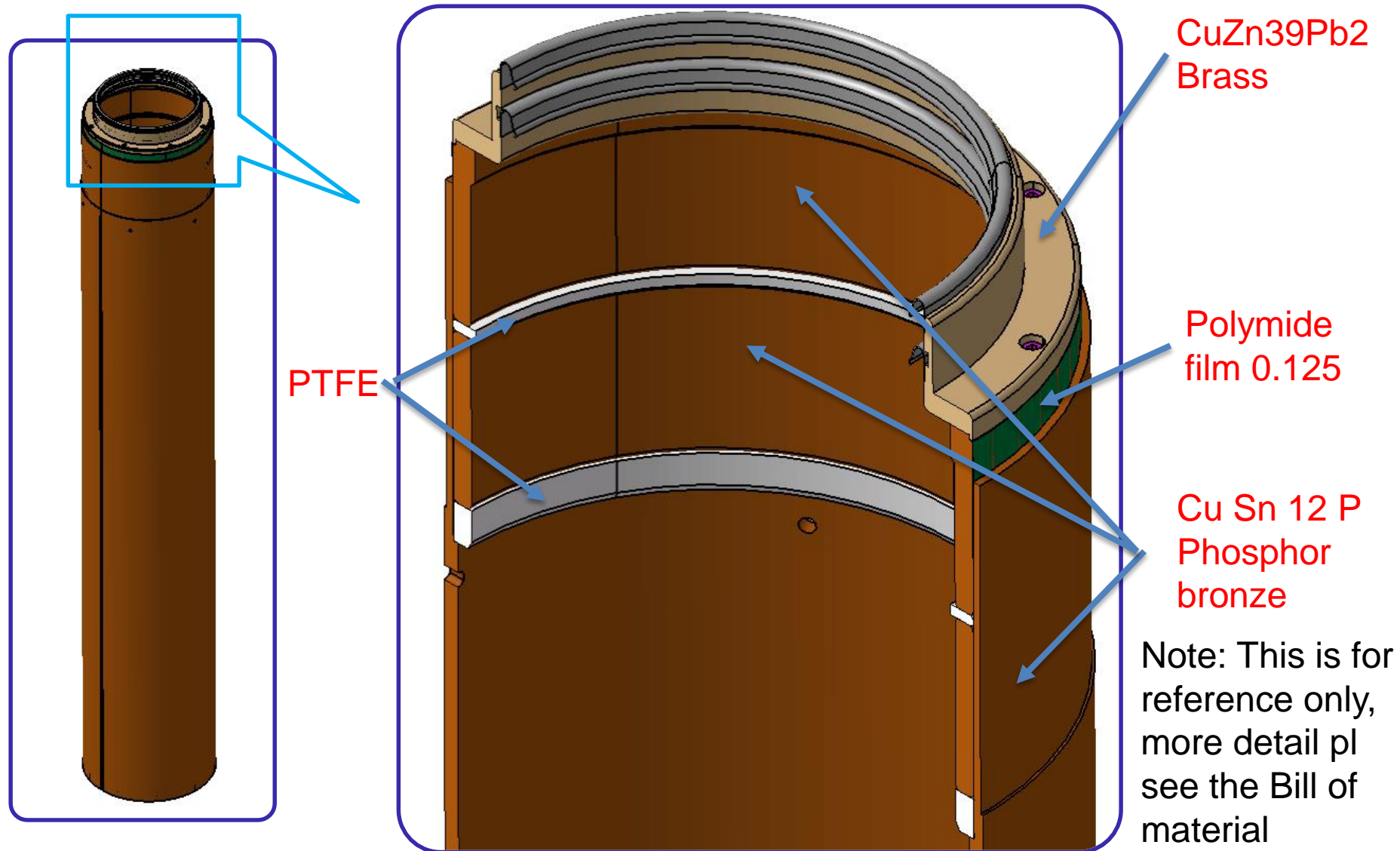
PPS HPV

Ultem 2100  
M10



Note: This is for  
reference only,  
more detail pl  
see the Bill of  
material

# Mechanical Subassembly -7



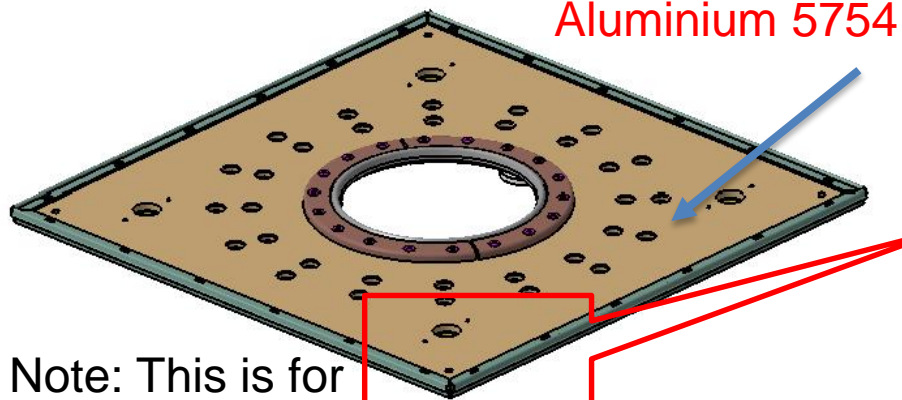
# Mechanical Subassembly -8

LENGTH : 1616 MM

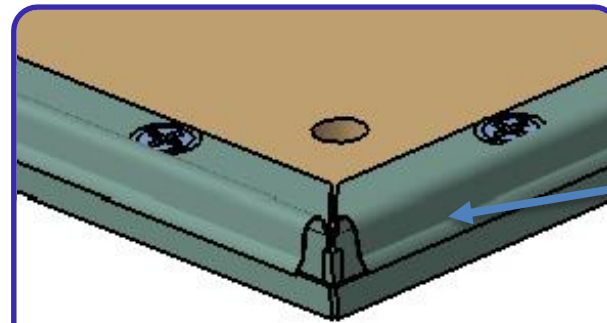
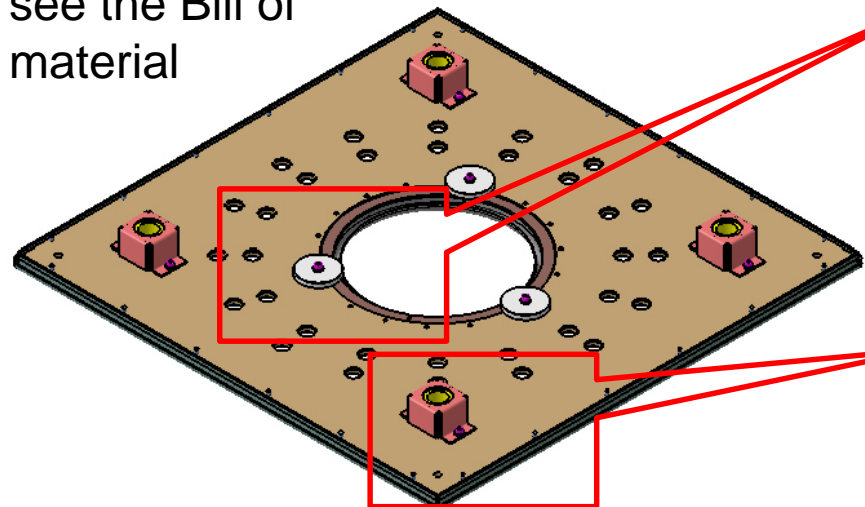


Note: This is for reference only, more detail pl see the Bill of material

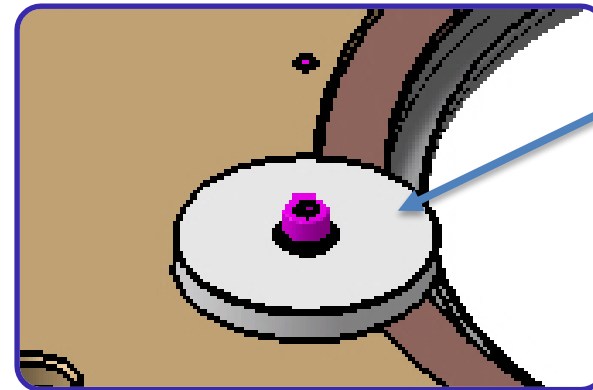
# Mechanical Subassembly -9



Note: This is for reference only, more detail pl see the Bill of material



Finger Contact



PTFE Teflon

PPS HPV

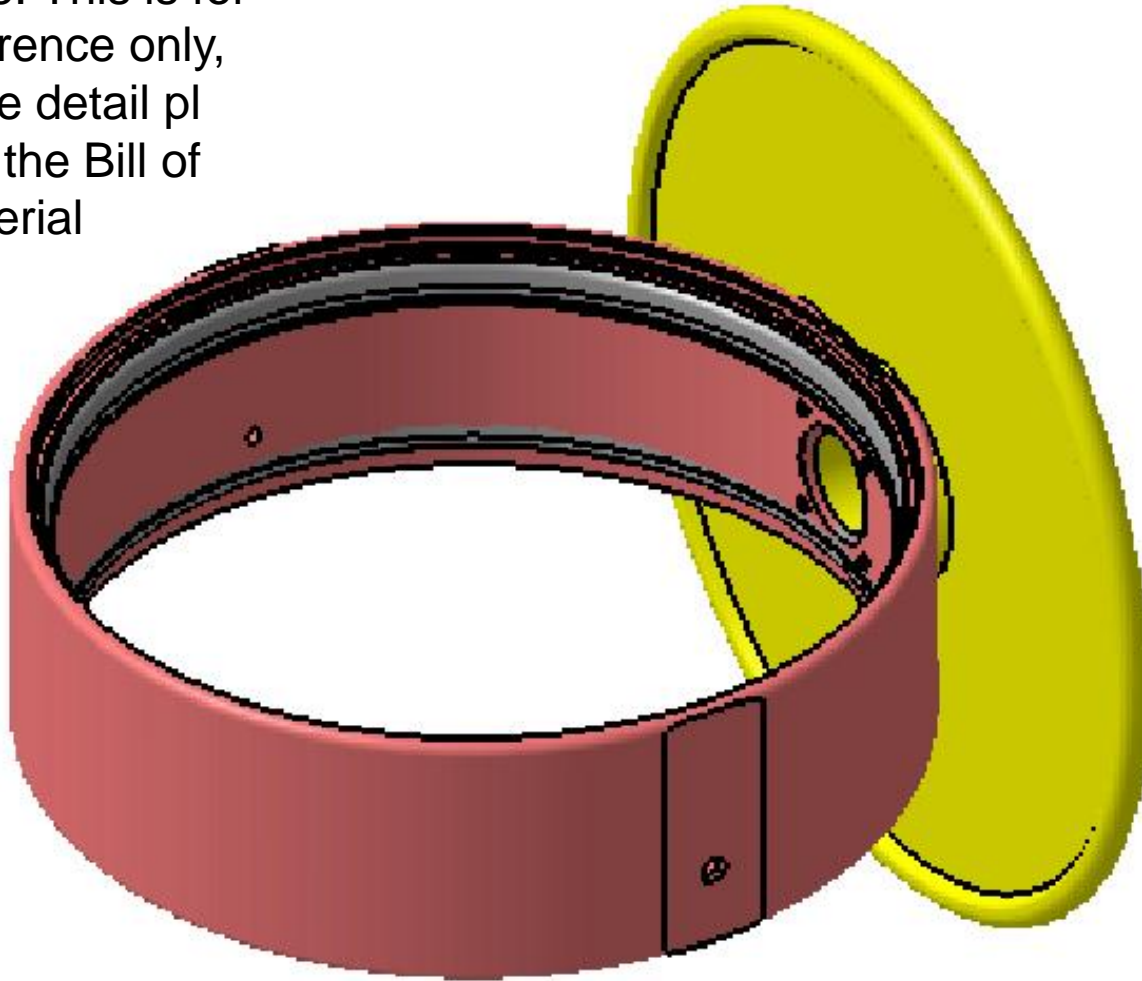
Aluminium 1050





# Mechanical Subassembly -10

Note: This is for reference only,  
more detail pl  
see the Bill of  
material





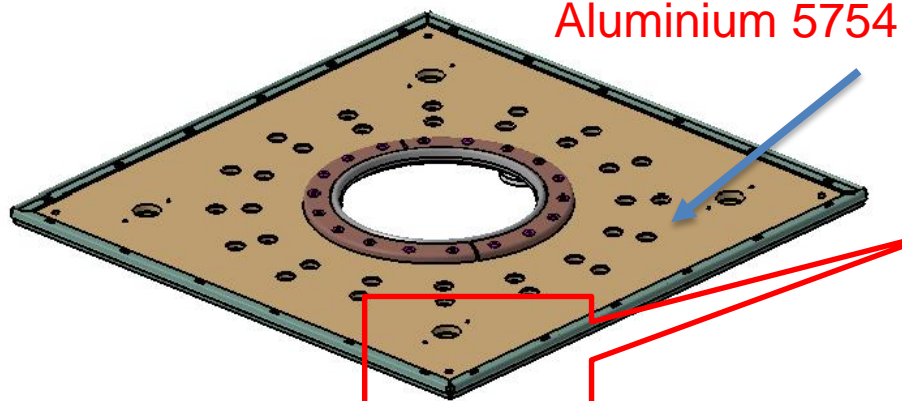
# Mechanical Subassembly -11

LENGTH : 1687 MM



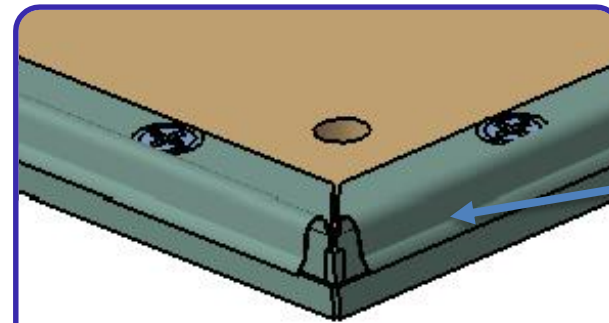
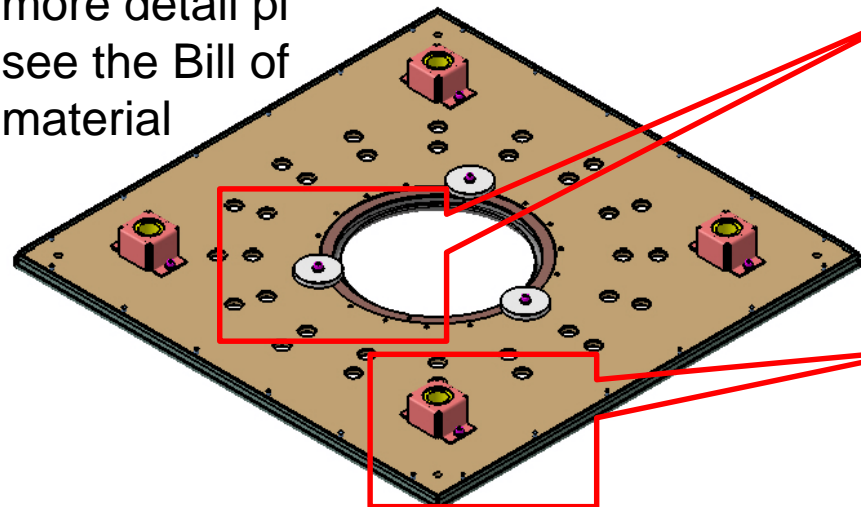
Note: This is for reference only, more detail pl see the Bill of material

# Mechanical Subassembly -12

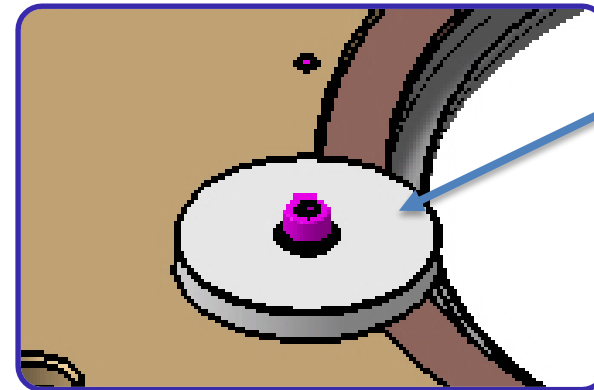


Note: This is for reference only,

more detail pl see the Bill of material



Finger Contact



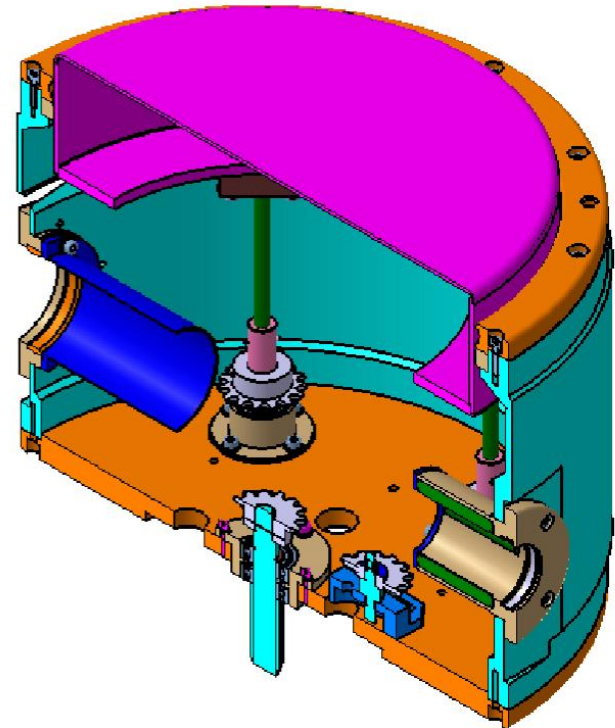
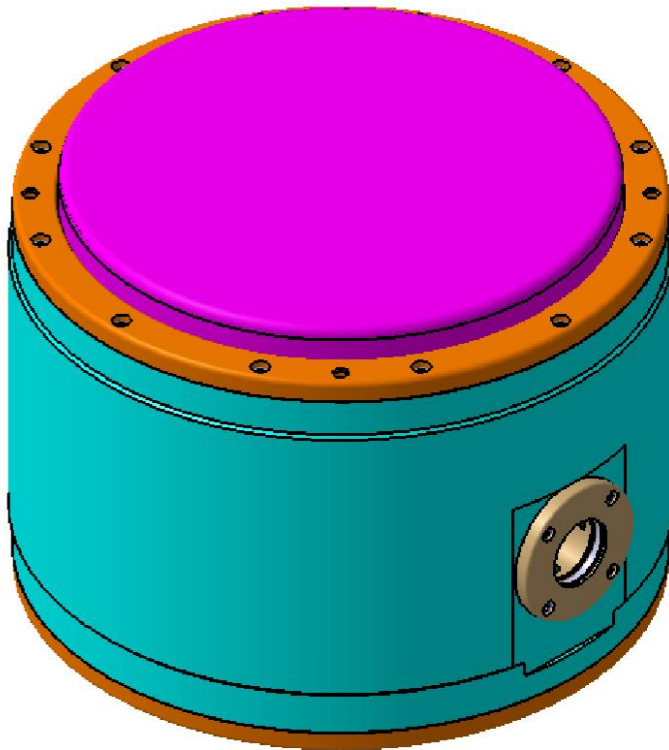
PTFE Teflon

PPS HPV

Aluminium 1050

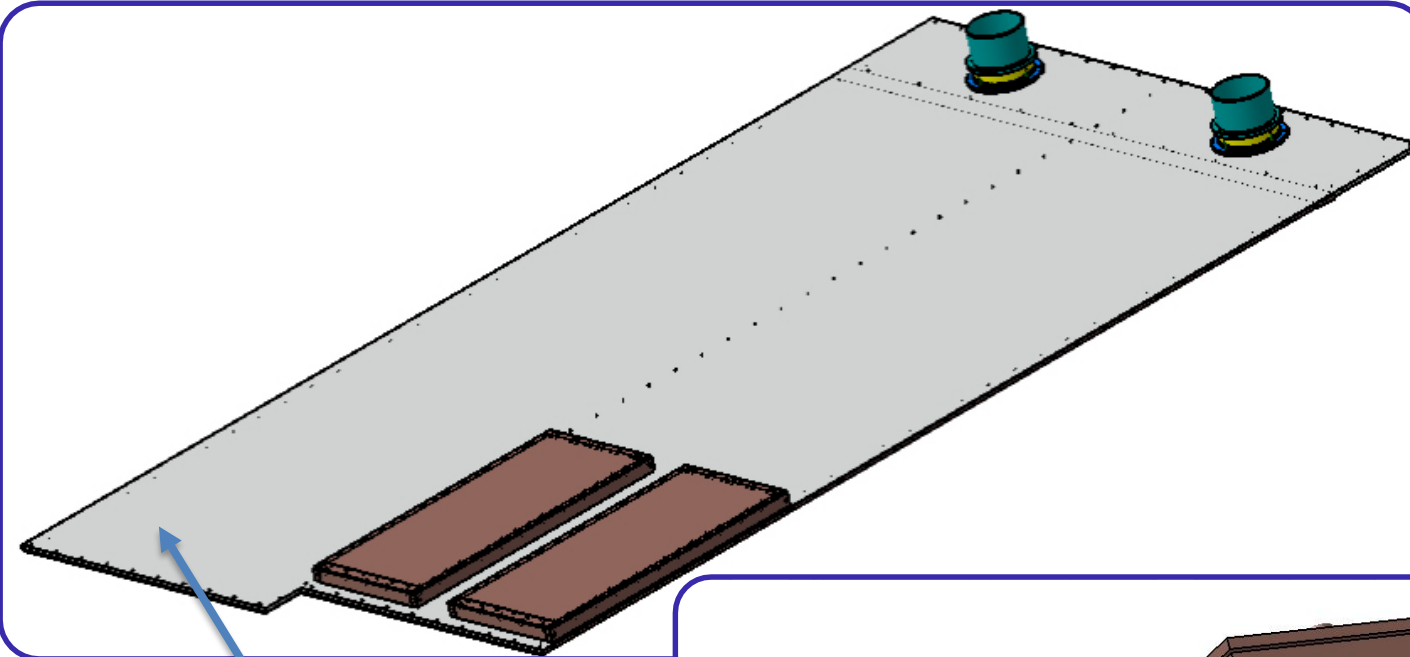


# Mechanical Subassembly -13



Note: This is for reference only, more detail pl see the Bill of material

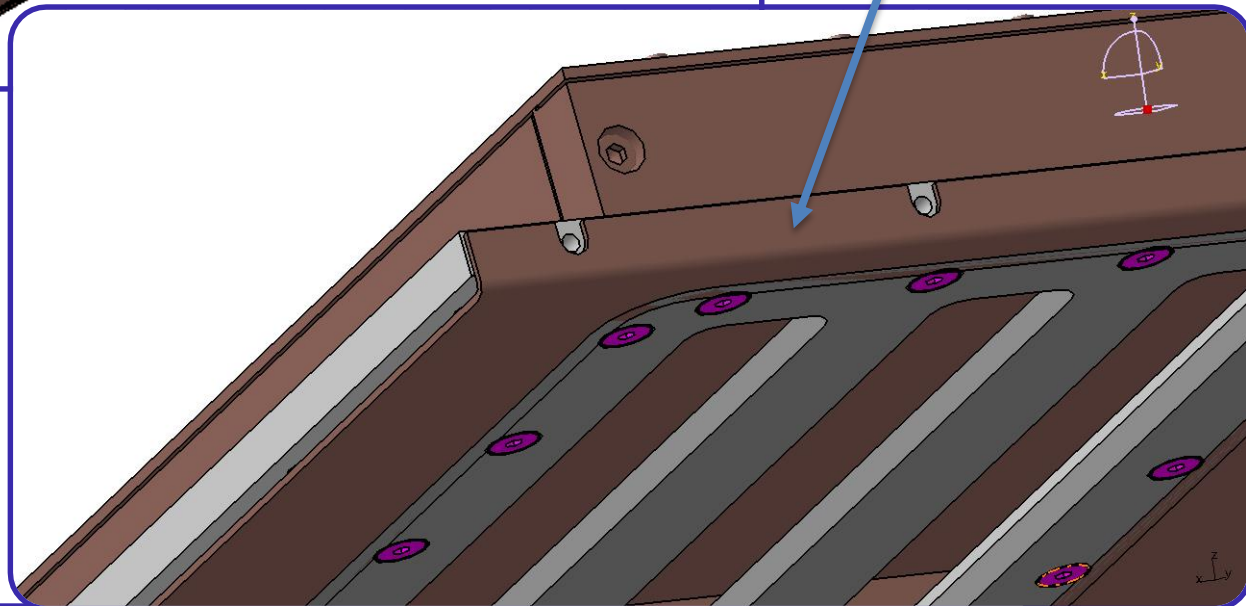
# Mechanical Subassembly -14



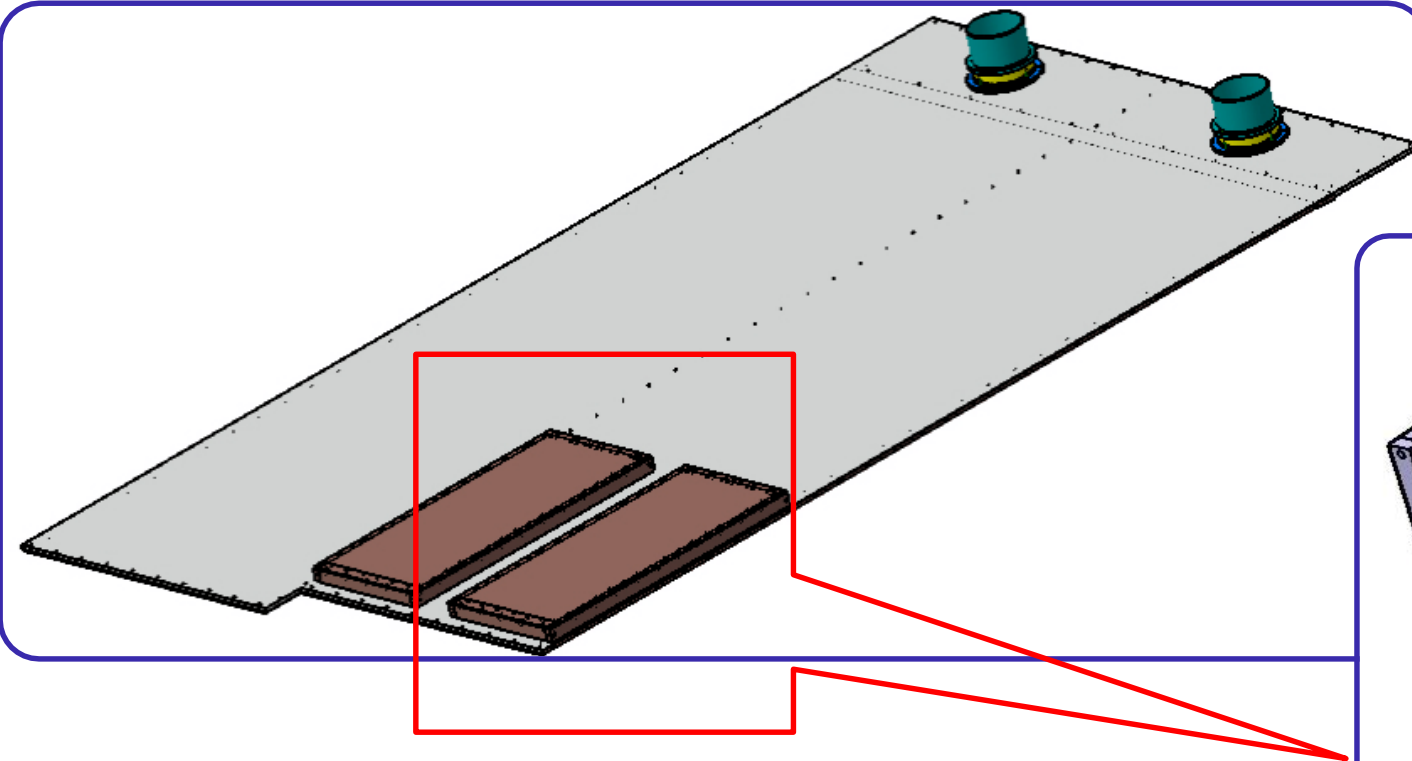
Aluminium 5754

Note: This is for reference only, more detail pl see the Bill of material

Brass Cu Zn 36

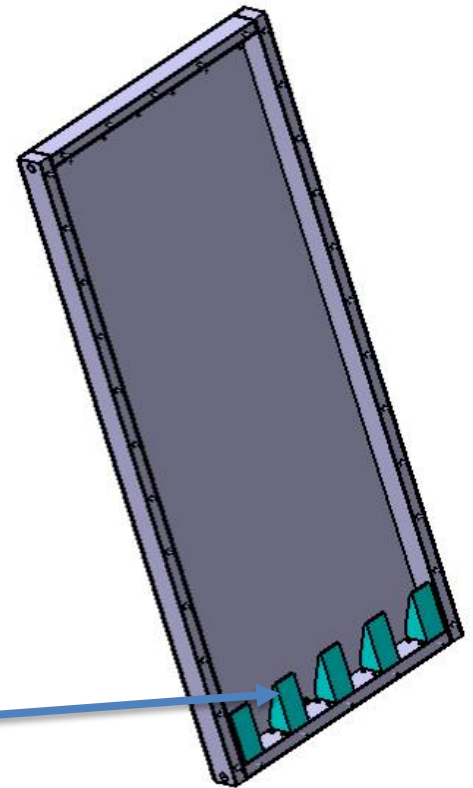


# Mechanical Subassembly -14



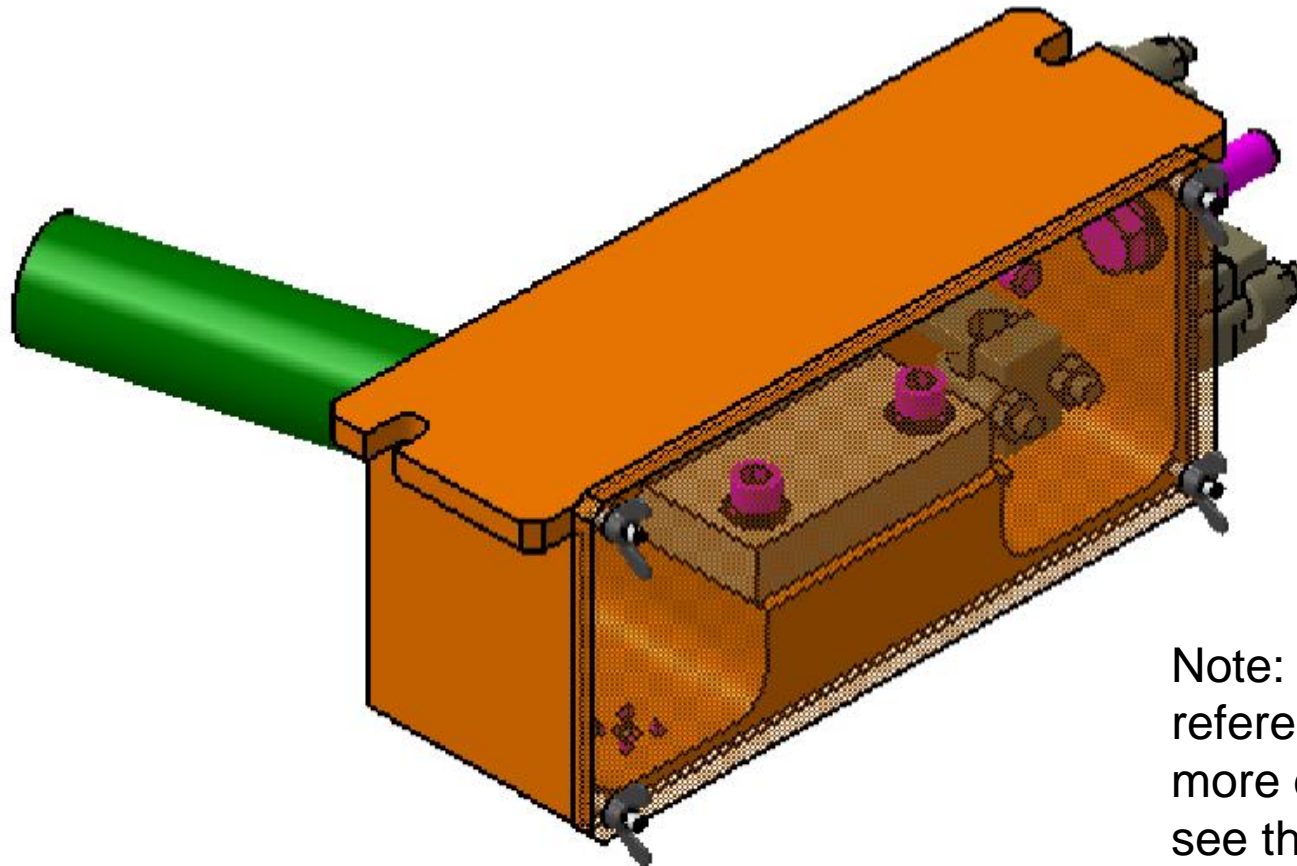
Note: This is for  
reference only,  
more detail pl  
see the Bill of  
material

[Eccosorb MF124](#)



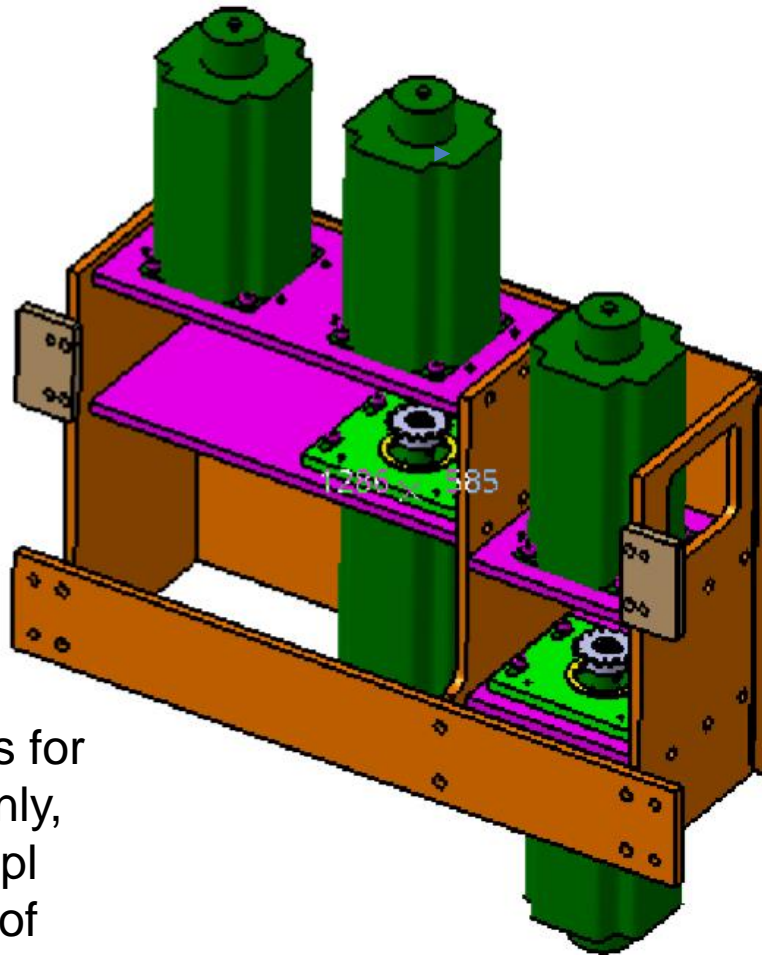


# Mechanical Subassembly -15



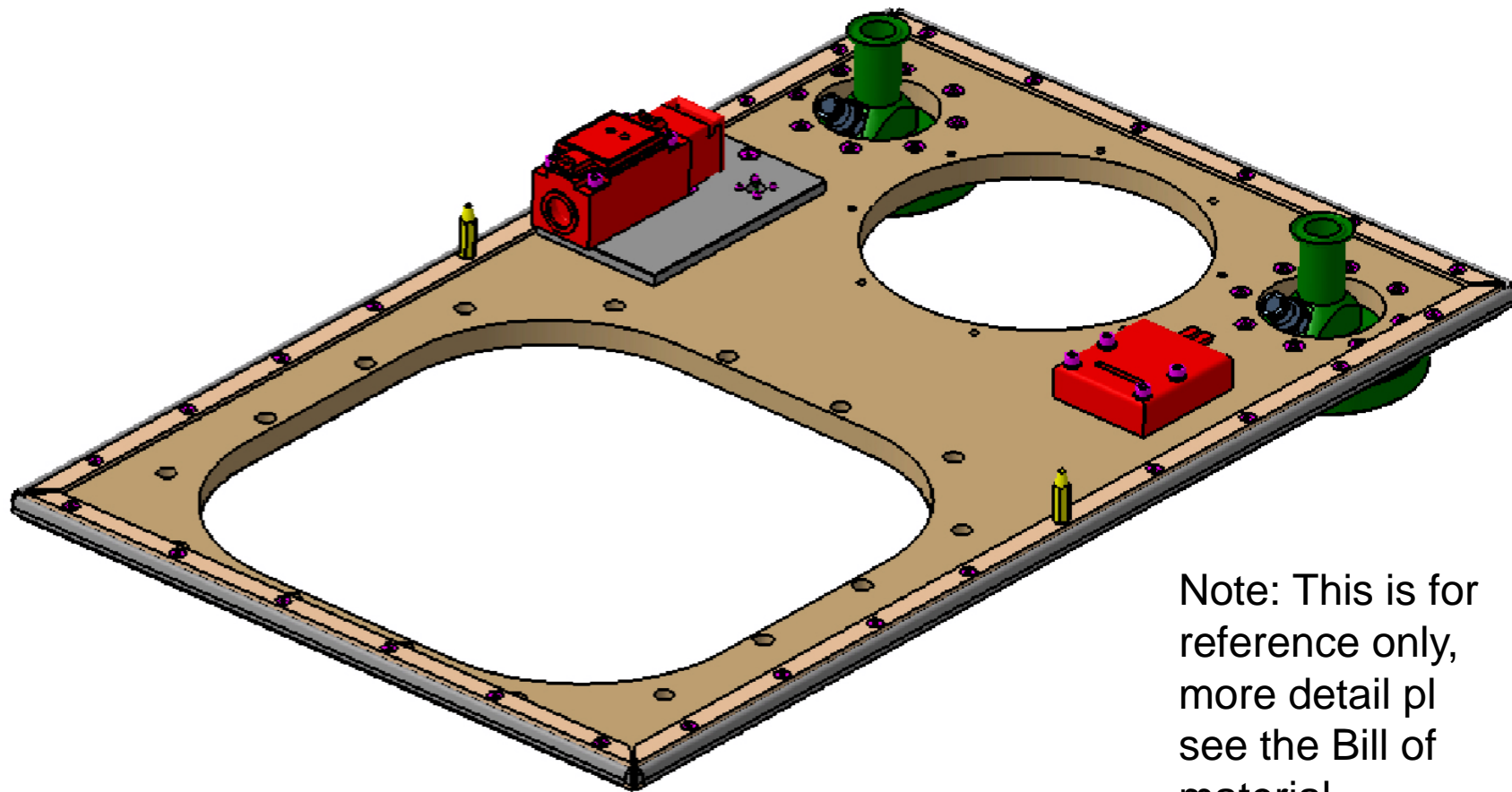
Note: This is for reference only, more detail pl see the Bill of material

# Mechanical Subassembly -16



Note: This is for reference only,  
more detail pl  
see the Bill of  
material

# Mechanical Subassembly -17



Note: This is for reference only, more detail pl see the Bill of material

# Standard Parts

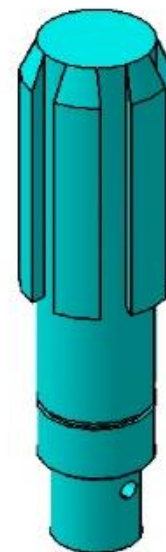
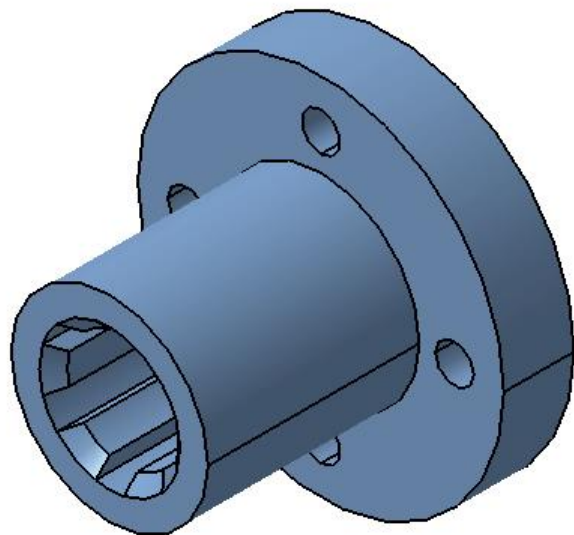
Sr. No	Name of Components	Reference	Company
1	Multilam plug	SA 403	MC France



Typ Type Type	Bestell-Nr. Order No. No. de Cde	Nenn-Ø Nominal-Ø Ø nominal	Anschlussvariante Type of termination Type de raccordement	Metallteile / Oberfläche Metal parts / plating Partie métallique / traitement	Auszugskraft Withdrawal force Effort de débrochage	Obere Grenztemperatur Max. Temperature Température max.	Bemessungsstrom <sup>1)</sup> Rated current <sup>1)</sup> Intensité assignée <sup>1)</sup>	Kontaktwiderstand Contact resistance Résistance de contact
		mm			N	°C	A	mΩ
<b>SA403</b>	<b>22.1053</b>	4	M4	CuZn, Au	~5	150	50	0,3

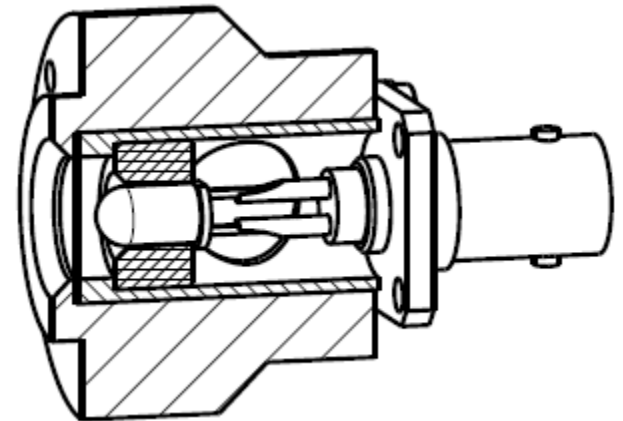
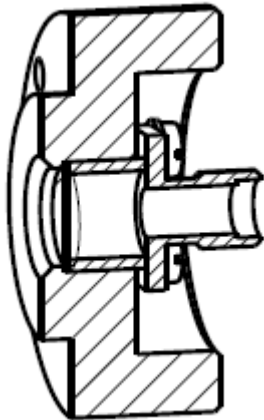
# Standard Parts

Sr. No	Name of Components	Reference	Company
2	Spline Bore hub KN 16 x 20	A1-870-16	Michaud Chailly
3	Spline axle KN 16 x 20	A1-850-16	Michaud Chailly



# Standard Parts

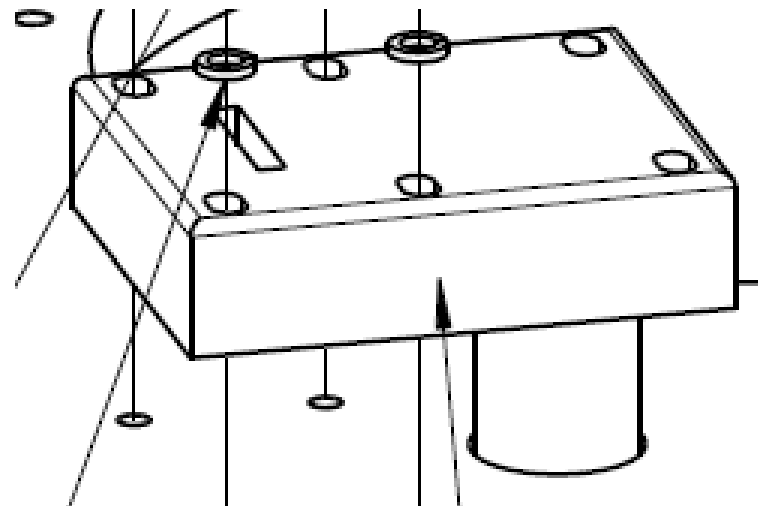
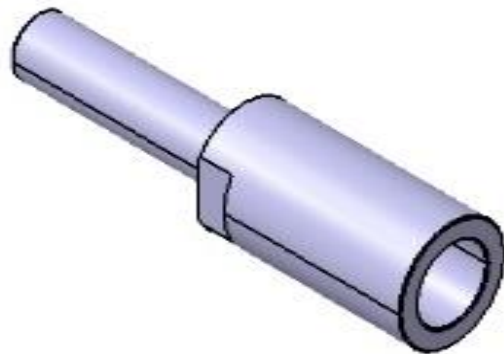
Sr. No	Name of Components	Reference	Company	Used
4	Flash detector			
5	Test lamp	HLMP - 8100	HP	





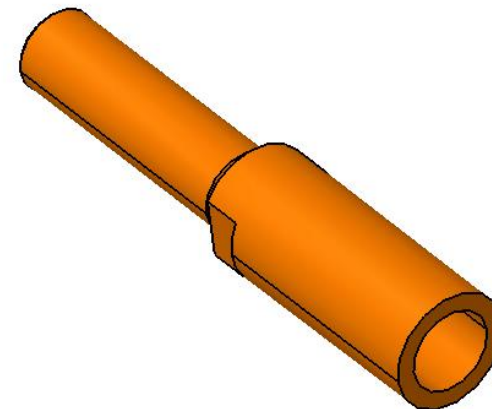
# Standard Parts

Sr. No	Name of Components	Reference	Company	Used
6	Dowel Bush	B25N	Multi contact	
7	Door lock	PSPICPS6 000	HF Securite	



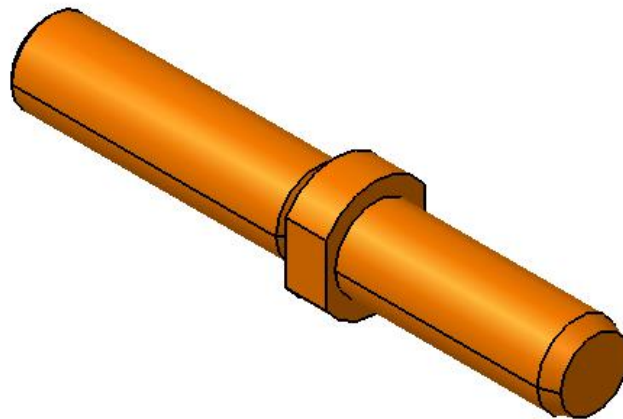
# Standard Parts

Sr. No	Name of Components	Reference	Company	Used
8	Safety switch	XC5A702	Schneider electrical	
9	Socket B14N with thread connection		MC France	



# Standard Parts

Sr. No	Name of Components	Reference	Company	Used
10	Spindle with end	S14N	MC France	



Thanks